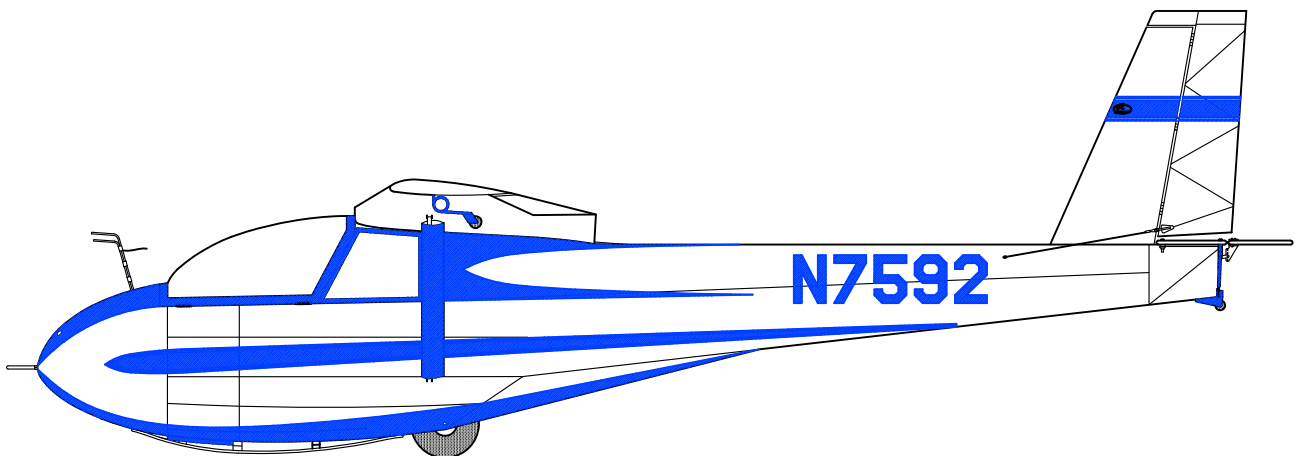
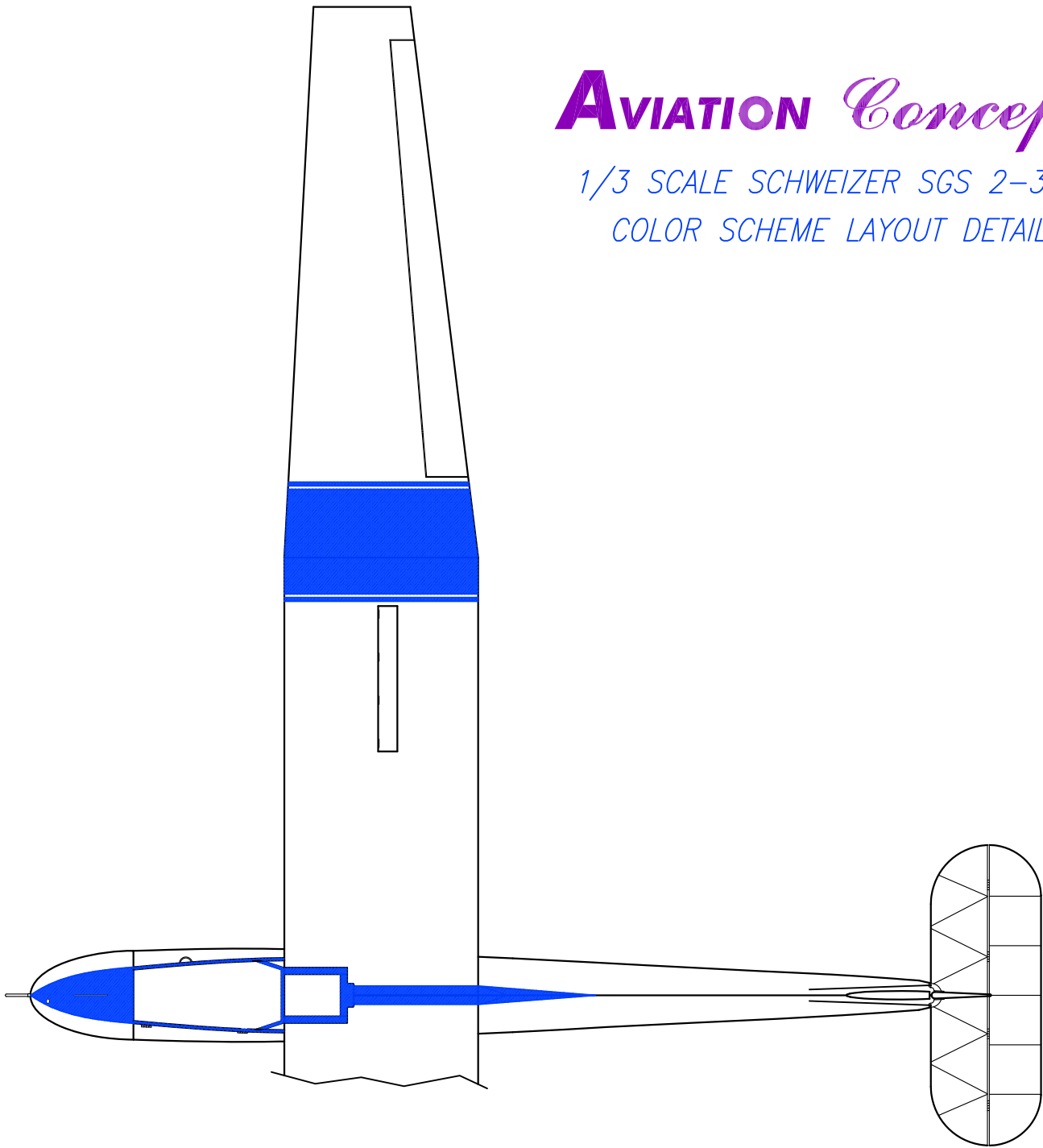


AVIATION *Concepts*

1/3 SCALE SCHWEIZER SGS 2-33 A
COLOR SCHEME LAYOUT DETAILS



When I first saw this color scheme on a post card, I fell in love with it. I have seen this scheme in red and blue also. Didn't think I could do it but with the aid of a few paint masks it was now a lot easier.

The long stripe on the side of the fuselage tapers down as it goes rearward. The band, gaps and the stripes taper and this would have been very difficult to mask manually. (see Detail 4 and Detail 5). This mask is in 2 parts, a front section and a rear section.

The second paint mask is the bullet under the wing. (Detail 3)

Lastly the N numbers also have a paint mask. Stick on vinyl number graphics just didn't look good. The full scale was painted on in the base color scheme.

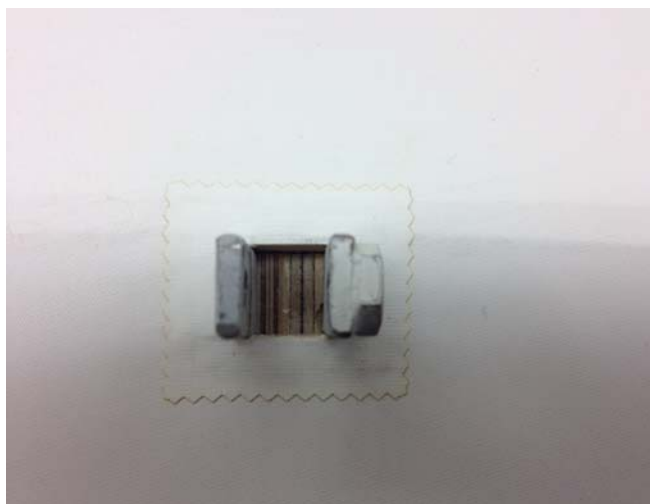
I like Krylon spray paint, (Ace Hardware store sells them) It literally dries to the touch in 11 minutes. At the time I painted mine, Krylon did not have the correct orange so I used Rustoleum. The drying time was very long, 12 plus hours. When painting Monokote or Ultracote, Mask off your area first and use #000 steel wool to "scratch" the glossy shine of this covering film. Then "etch" on your first coat by misting on. Wait 10 minutes and continue to paint.

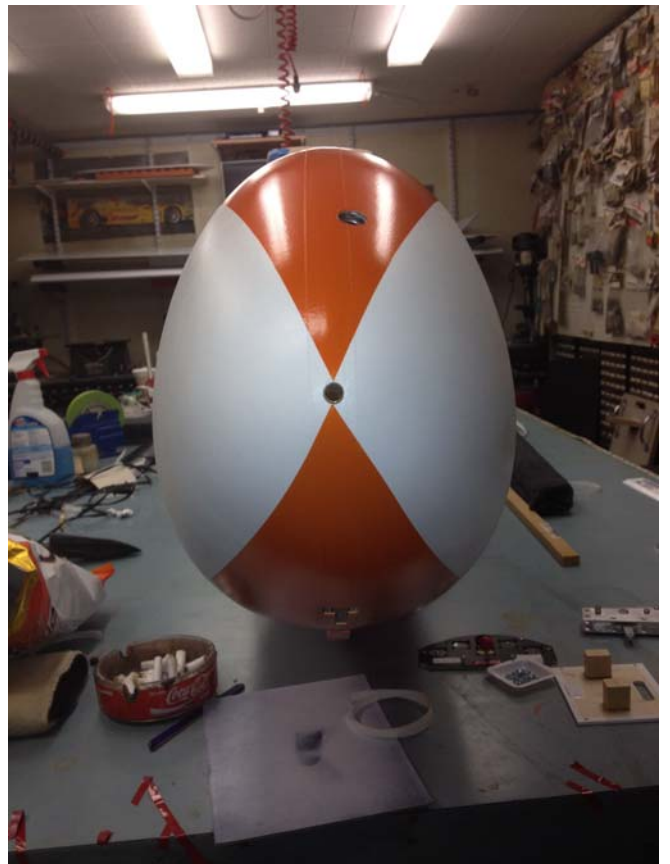
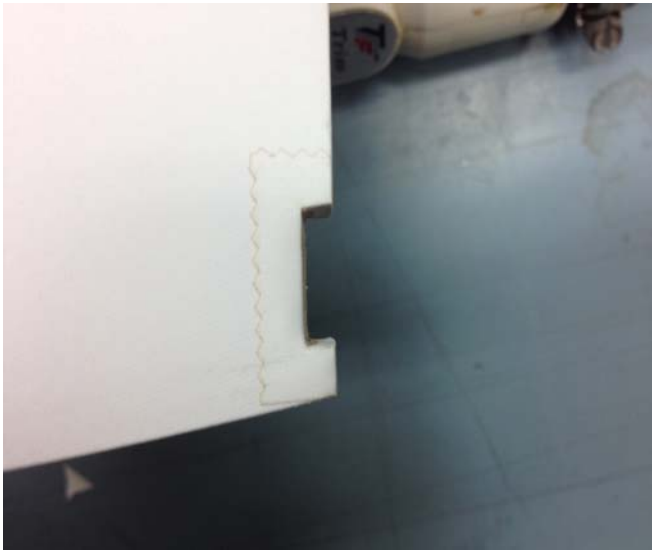
When painting fabric, just mask and paint. Use multiple light coats so paint won't bleed under the mask because of the weave.

The nose cone and the bottom of the fuselage is masked manually. Do to compound curves and angles there is no paint masks available for this area. But it wasn't that difficult. See Detail 6. Behind the main wheel it was a straight line point to point. In front of the wheel is a reference dimension of 1 1/8". This is from the end of the stringer that just terminates to nowhere. The 9 7/8" dimension establishes the starting point for the bottom of the nose cone and the bottom of the fuselage.

The band on the wing was added after a couple of years later to really help see the

model up at altitude. Please contact me for purchasing paint masks and any N numbers of your choice. We also have laser cut files saved for scale pinking reinforcing patches and pinking tape. aviationconcept@optonline.net



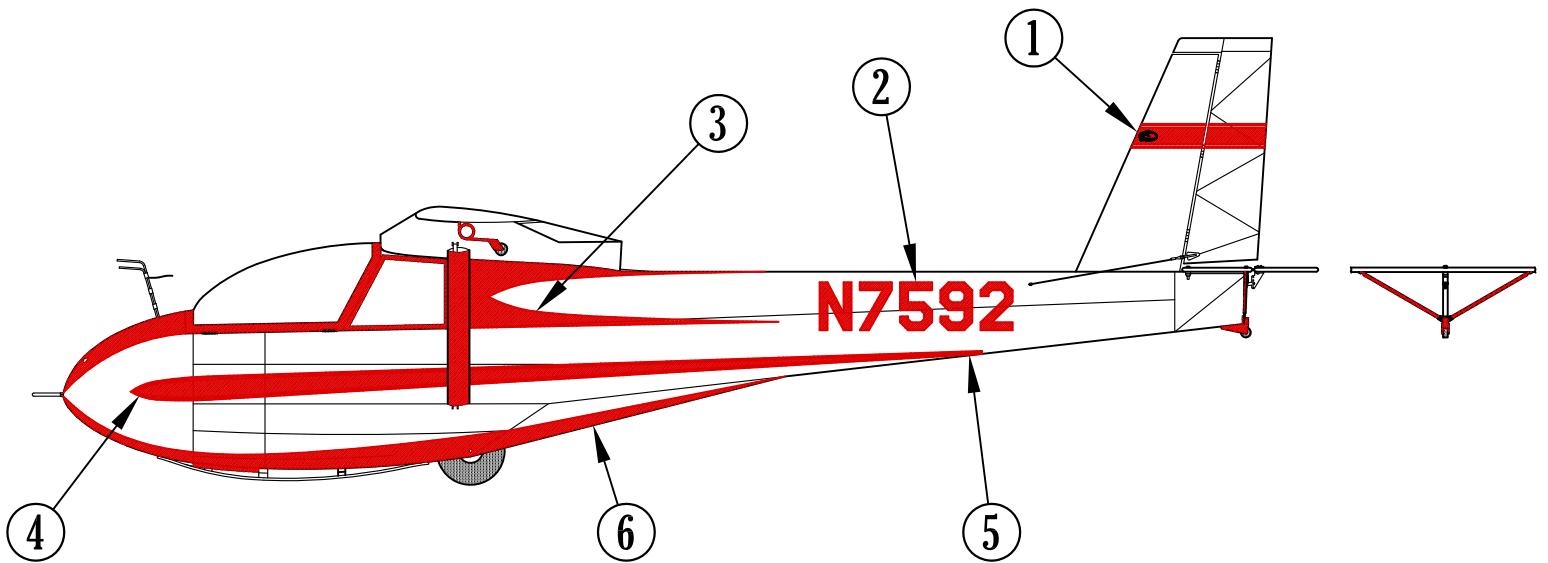
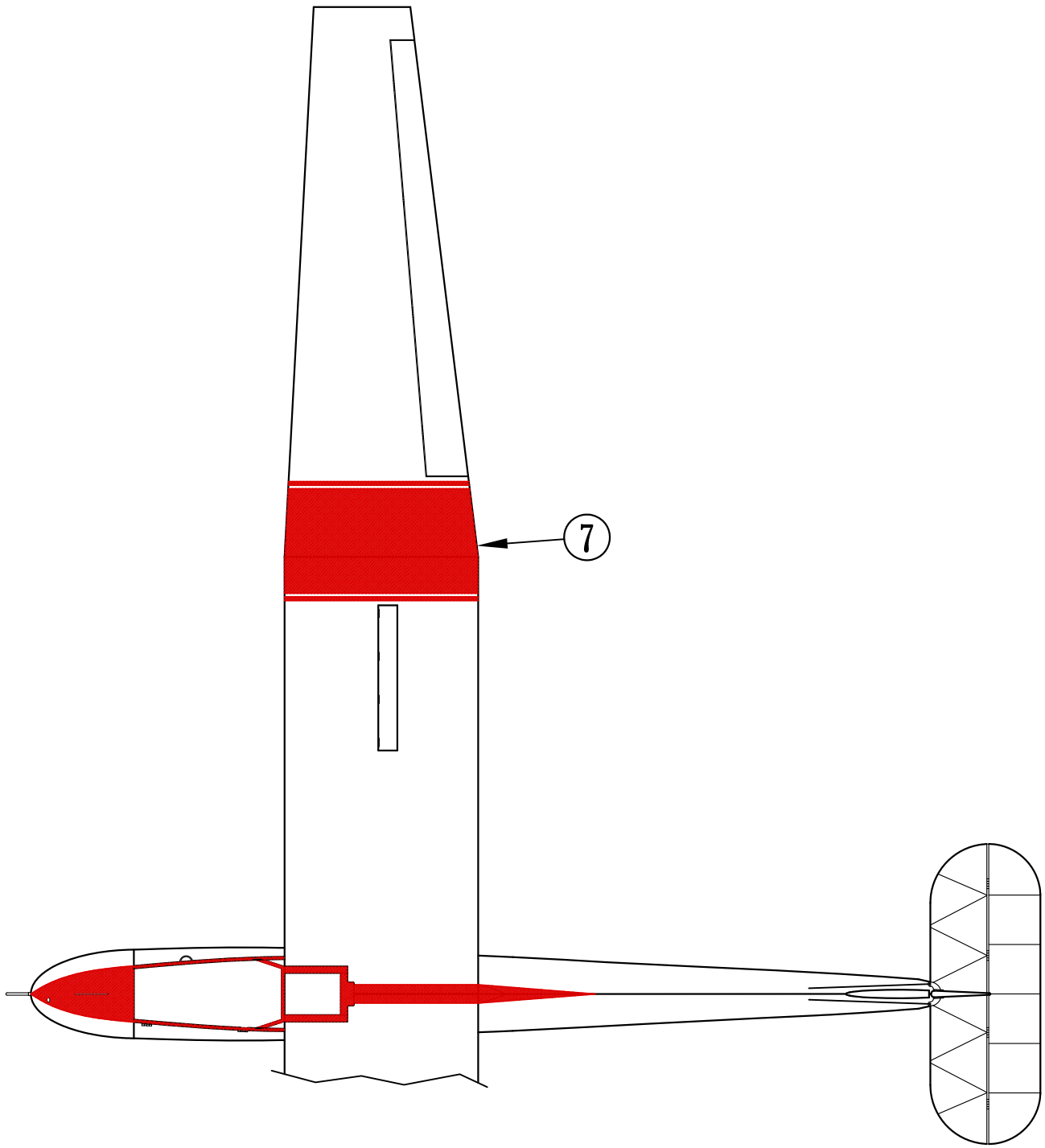


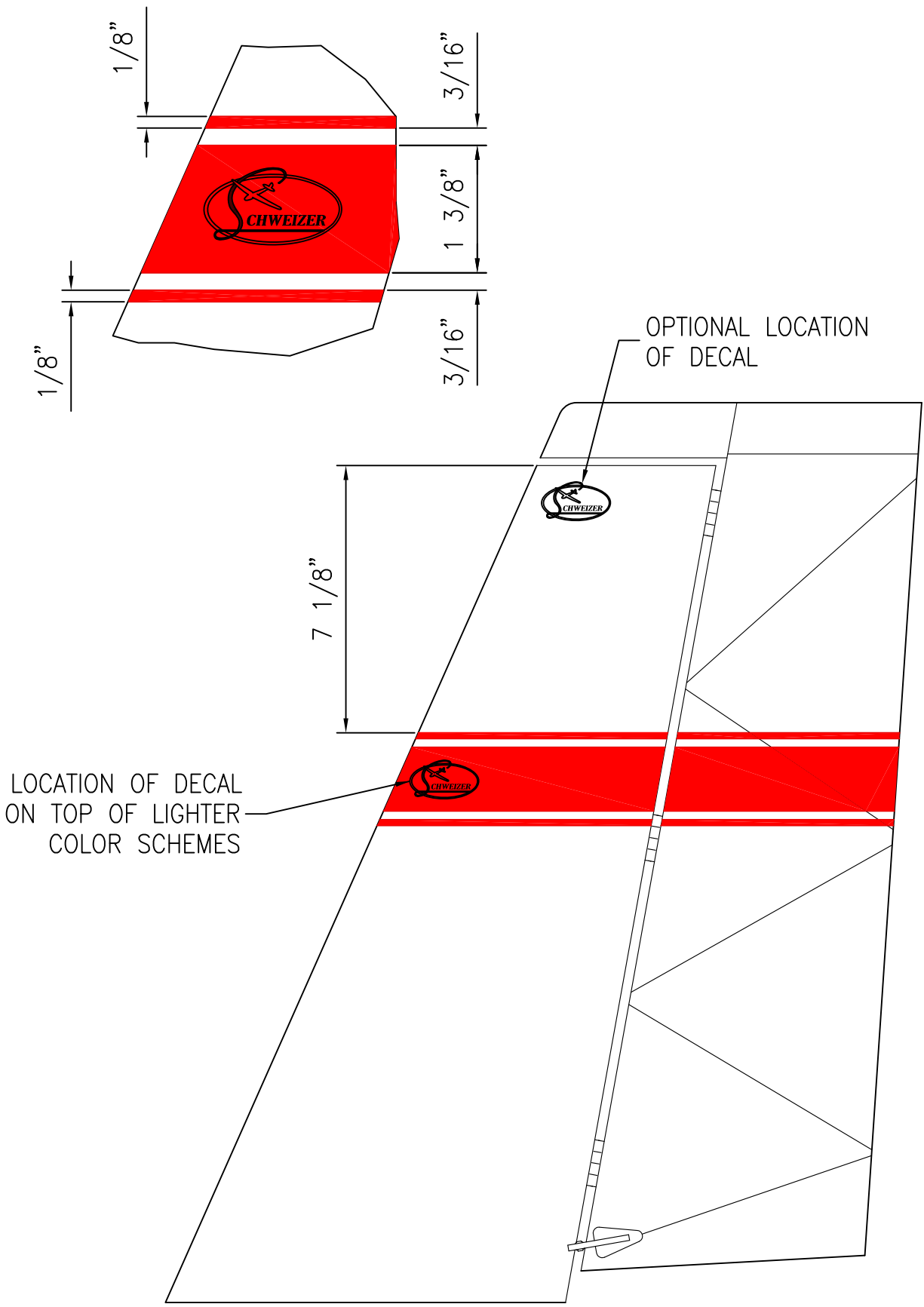






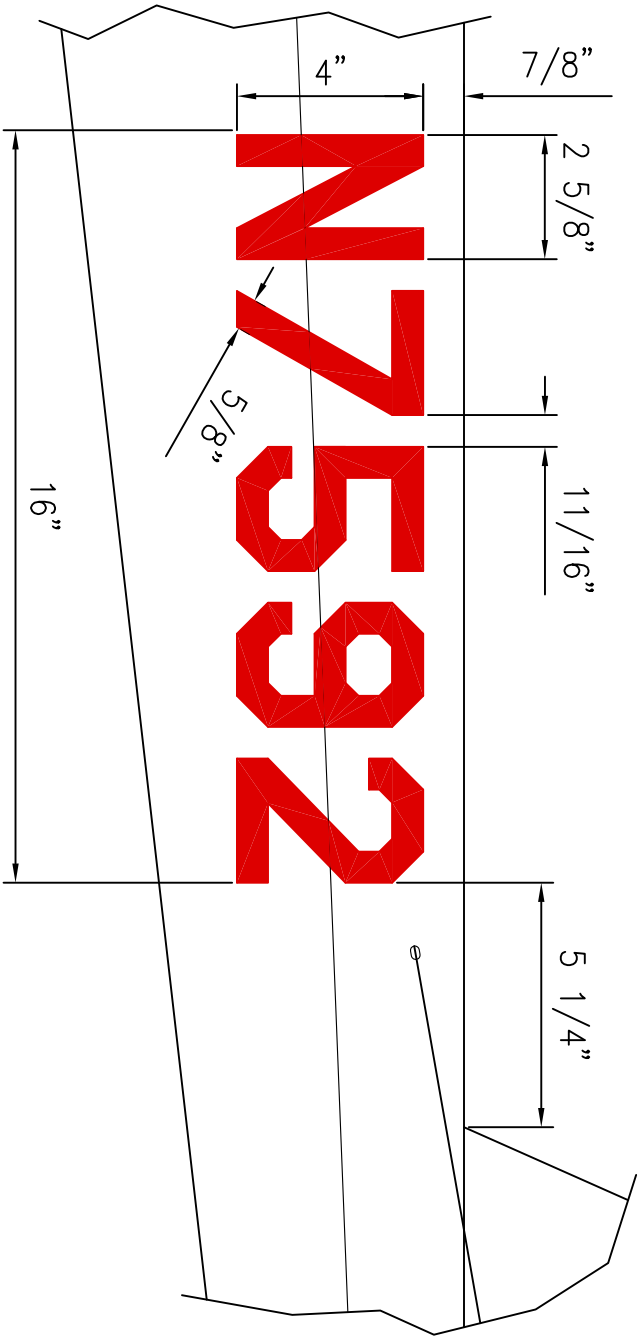




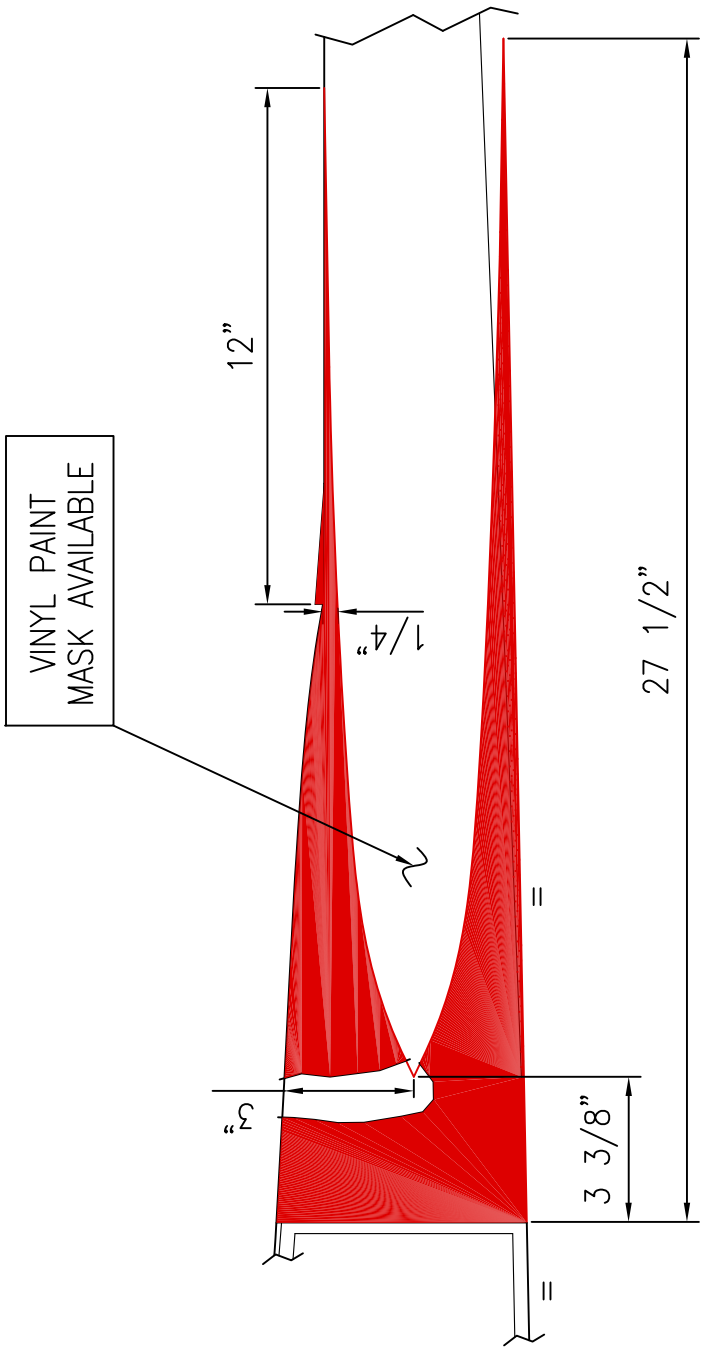


DETAIL 1

VINYL PAINT
MASK AVAILABLE



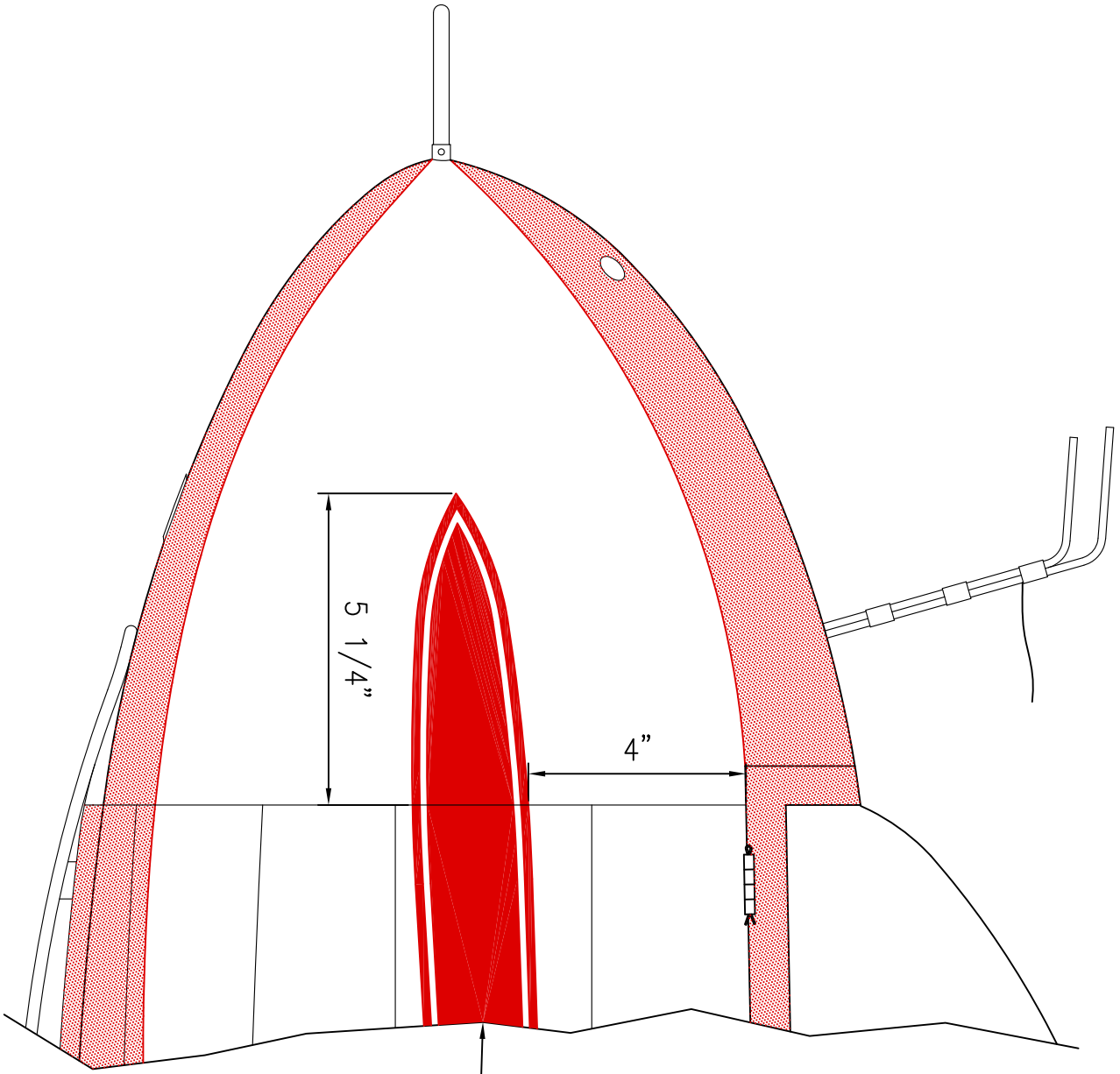
DETAIL 2



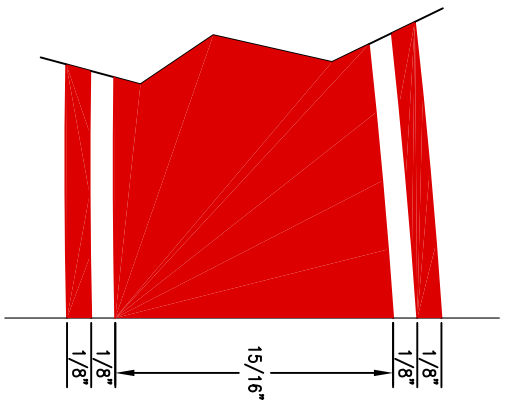
= DENOTES LINES ARE INLINE AND PARALLEL

DETAIL 3

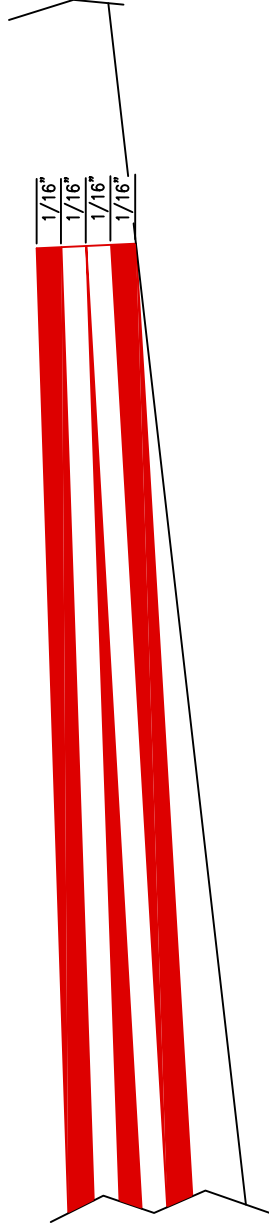
DETAIL 4



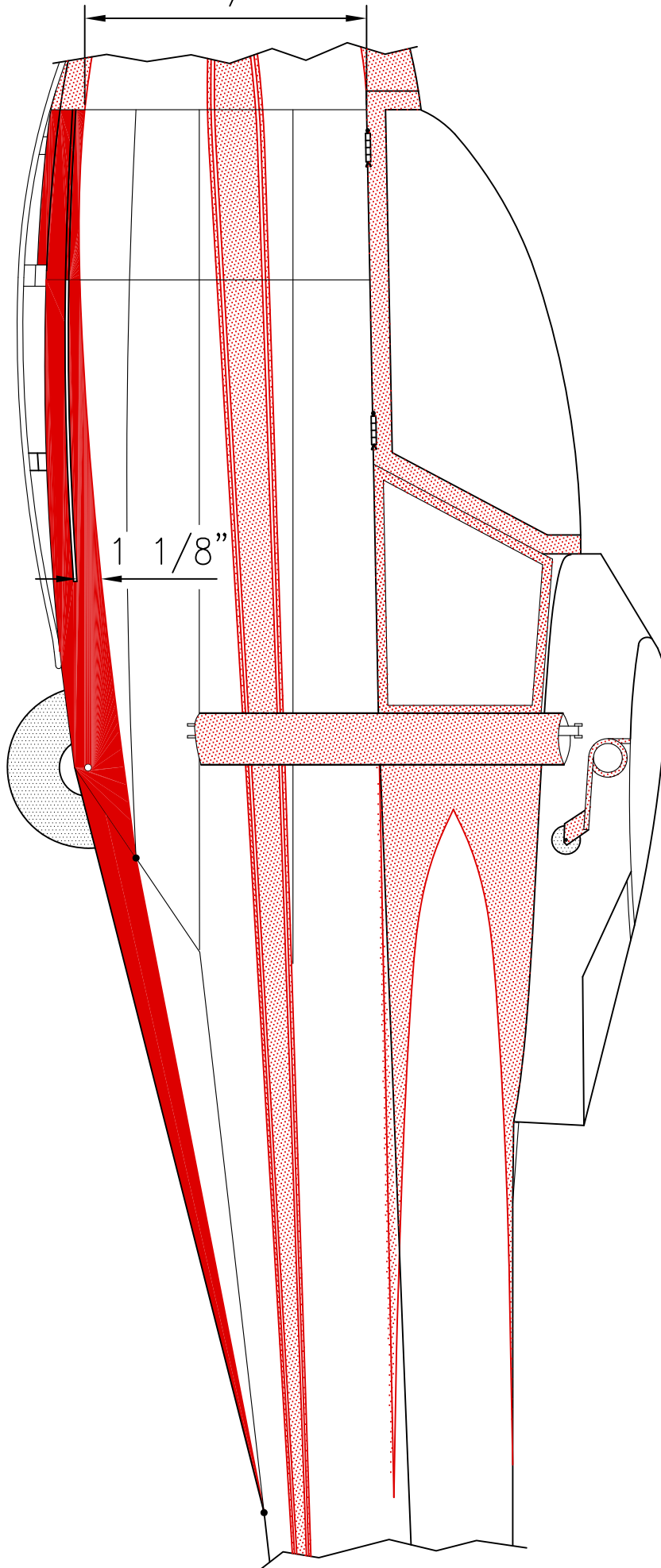
VINYL PAINT
MASK AVAILABLE
FRONT 36"



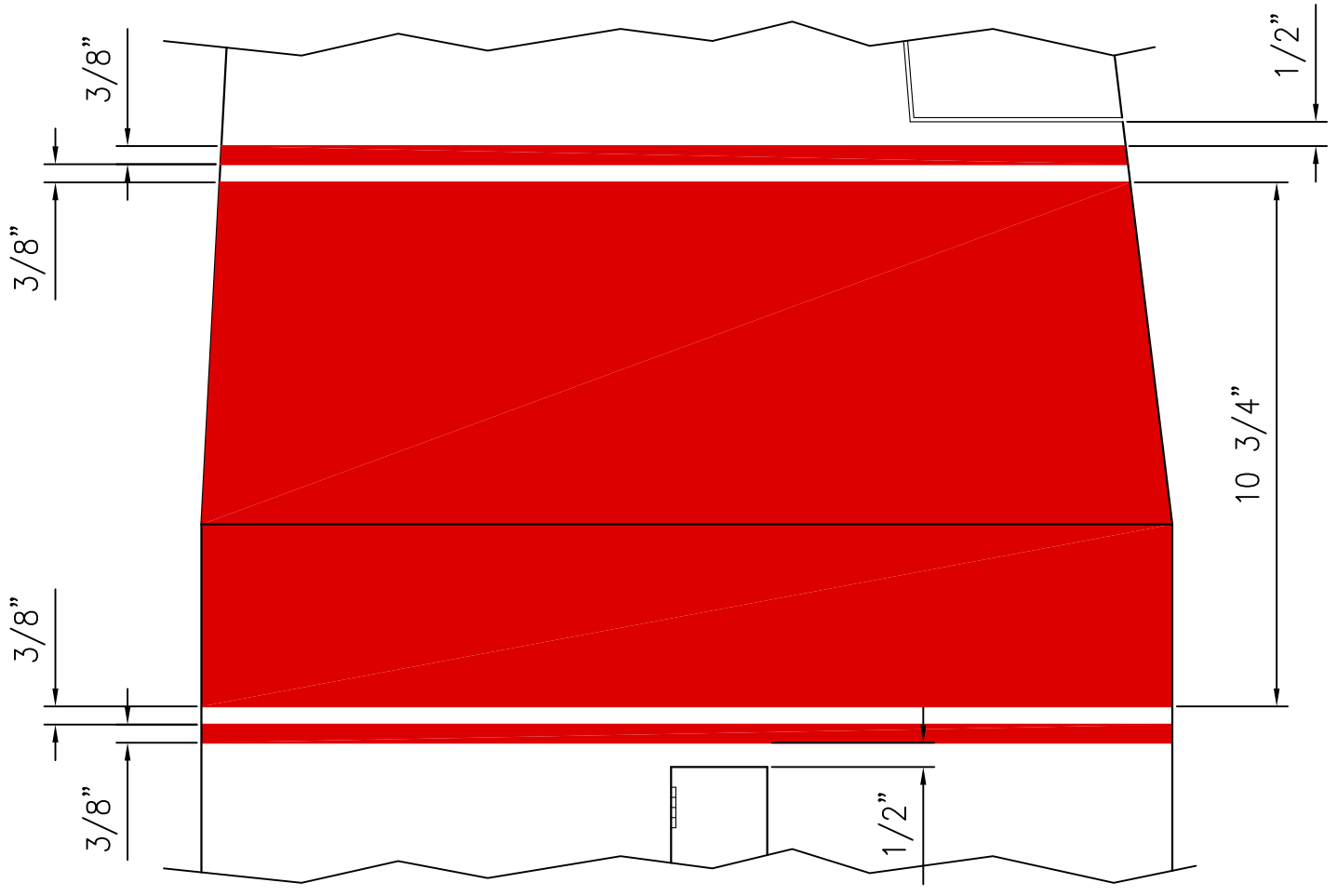
VINYL PAINT
MASK AVAILABLE
REAR 36"



9 7/8"



DETAIL 6



DETAIL 7

*Use this sheet to create or
modify your own color scheme.*

